

Cabinet "U" handles

Aluminium

SPECIFICATION

Aluminium **AL**

d₁ = 20: Solid material

d₁ = 28: Tube-Ø 28 x 4

plastic coated

black, RAL 9005, textured finish **SW**

black, RAL 9005, antibacterial **SMA**

silver, RAL 9006, textured finish **SR**

white, RAL 9016, antibacterial **WSA**

blank, tumbled **BL**

Threaded bushings

Aluminium



INFORMATION

GN 426 cabinet „U“ handles are made from a bent aluminium profile and have excellent stability and ergonomic design. Due to the production process, special designs can be supplied even in relatively small quantities.

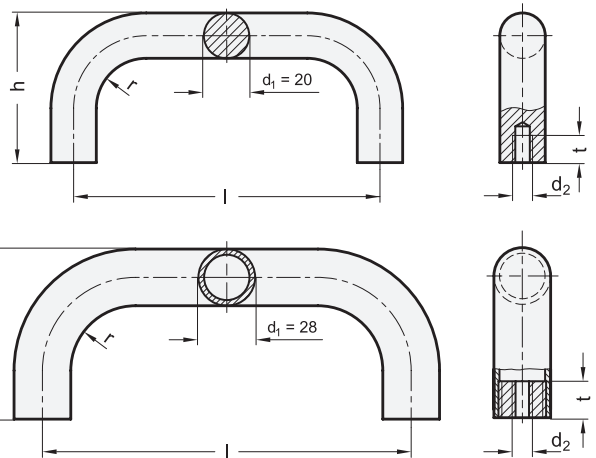
In addition to the standard surfaces, these cabinet „U“ handles are also available with a functional coating.

The **WSA/SMA** version has a powder coating based on zinc molybdate, which gives it antibacterial properties. The principle of action, which is activated by the presence of moisture, demonstrably reduces the growth of viruses, bacteria, and fungi within 24 hours, so that contaminated surfaces ultimately have less than 0.2% of the original number of microbes.

Standard elements with antibacterial plastic coating are primarily used in the health care sector and in public buildings, such as airports, train stations, stadiums, etc.

TECHNICAL INFORMATION

- Load rating information (see page A35)



* Complete with colour index of the Cabinet "U" handles (SW, SR, WSA, BL or SMA)

SW	SR	WSA	BL	SMA
RAL 9005	RAL 9006	RAL 9016, antibacterial	blank	RAL 9005, antibacteri

GN 426

Description	d ₁	l ±0.25	d ₂	h	r	t min.	⚖
GN 426-AL-20-200-*	20	200**	M 8	68	22	15	231
GN 426-AL-20-250-*	20	250**	M 8	68	22	15	285
GN 426-AL-20-300-*	20	300**	M 8	68	22	15	330
GN 426-AL-20-350-*	20	350	M 8	68	22	15	375
GN 426-AL-28-250-*	28	250**	M 10	78	32	15	290
GN 426-AL-28-300-*	28	300**	M 10	78	32	15	330
GN 426-AL-28-350-*	28	350	M 10	78	32	15	375
GN 426-AL-28-400-*	28	400**	M 10	78	32	15	415

**Sizes also available for type WSA and SMA

